

Material: Messing blank  
 O-Ring: EPDM  
 Einsatztemperatur: -40 °C bis 100 °C  
 Schutzart: IP 68

Material: brass  
 O-ring: EPDM  
 Temperature range: -40 °C to 100 °C  
 Protection type: IP 68

**535.11**  
**535.22**  
**535.33**

Zertifikate: SIRA 10 ATEX 1225 X  
 IECEx SIR 07.0010 X

Certificates: SIRA 10 ATEX 1225 X  
 IECEx SIR 07.0010 X

Weitere internationale Zulassungen vorhanden

Further international approvals available



**ATEX II 2GD**  
 Ex d IIC + Ex e II

Gewinde Thread						Gewinde Thread					
AG	IG	mm	d1	Form	HUGRO No.	AG	IG	mm	d1	Form	HUGRO No.
<b>M M</b>						<b>Pg Pg</b>					
16 x 1,5	20 x 1,5	23,4	11	2	535.1720.22	7	9	23,4	7	2	535.0709.11
20 x 1,5	16 x 1,5	23,4	-	1	535.2017.22	9	7	23,4	10	2	535.0907.11
20 x 1,5	25 x 1,5	27,9	15	2	535.2025.22	9	11	23,4	10	2	535.0911.11
25 x 1,5	16 x 1,5	27,9	-	1	535.2517.22	11	7	23,4	-	1	535.1107.11
25 x 1,5	20 x 1,5	27,9	-	1	535.2520.22	11	9	23,4	14	2	535.1109.11
25 x 1,5	32 x 1,5	27,9	20,8	2	535.2532.22	11	13,5	23,4	14	2	535.1113.11
32 x 1,5	20 x 1,5	37,6	-	1	535.3220.22	13,5	9	23,4	-	1	535.1309.11
32 x 1,5	25 x 1,5	37,6	-	1	535.3225.22	13,5	11	23,4	15	2	535.1311.11
32 x 1,5	40 x 1,5	37,6	26,8	2	535.3240.22	13,5	16	30,5	15	2	535.1316.11
40 x 1,5	25 x 1,5	47,2	-	1	535.4025.22	16	11	23,4	-	1	535.1611.11
40 x 1,5	32 x 1,5	47,2	-	1	535.4032.22	16	13,5	23,4	-	1	535.1613.11
40 x 1,5	50 x 1,5	47,2	33,5	2	535.4050.22	16	21	33	17,5	2	535.1621.11
50 x 1,5	32 x 1,5	56	-	1	535.5032.22	21	13,5	30,5	-	1	535.2113.11
50 x 1,5	40 x 1,5	56	-	1	535.5040.22	21	16	30,5	-	1	535.2116.11
50 x 1,5	63 x 1,5	56	44	2	535.5063.22	21	29	42,4	23,5	2	535.2129.11
63 x 1,5	40 x 1,5	70	-	1	535.6340.22	29	16	42,4	-	1	535.2916.11
63 x 1,5	50 x 1,5	70	-	1	535.6350.22	29	21	42,4	-	1	535.2921.11
63 x 1,5	75 x 1,5	70	55	2	535.6374.22	29	36	56	31	2	535.2936.11
75 x 1,5	50 x 1,5	80	-	1	535.7450.22	36	21	56	-	1	535.3621.11
75 x 1,5	63 x 1,5	80	-	1	535.7463.22	36	29	56	-	1	535.3629.11
						36	42	70	40	2	535.3642.11
						42	29	56	-	1	535.4229.11
<b>NPT NPT</b>											
1/2"	3/4"	27,9	15	2	535.1935.33	42	36	56	-	1	535.4236.11
3/4"	1/2"	27,9	-	1	535.3519.33	42	48	70	48	2	535.4248.11
3/4"	1"	37,6	20,5	2	535.3575.33	48	36	70	-	1	535.4836.11
1"	1/2"	37,6	-	1	535.7519.33	48	42	70	-	1	535.4842.11
1"	3/4"	37,6	-	1	535.7535.33						
1"	1 1/4"	47,2	26,8	2	535.7576.33						
1 1/4"	3/4"	47,2	-	1	535.7635.33						
1 1/4"	1"	47,2	-	1	535.7675.33						
1 1/4"	1 1/2"	56	33,5	2	535.7677.33						
1 1/2"	1"	56	-	1	535.7775.33						
1 1/2"	1 1/4"	56	-	1	535.7776.33						
1 1/2"	2"	70	41	2	535.7778.33						
2"	1 1/4"	70	-	1	535.7876.33						
2"	1 1/2"	70	-	1	535.7877.33						
2"	2 1/2"	80	54	2	535.7879.33						
2 1/2"	1 1/2"	80	-	1	535.7977.33						
2 1/2"	2"	80	-	1	535.7978.33						
2 1/2"	3"	95	64	2	535.7980.33						
3"	2"	95	-	1	535.8078.33						
3"	2 1/2"	95	-	1	535.8079.33						



Form 1



Form 2

**Auf Anfrage:**

- weitere Größen (Kombinationen)
- andere Gewinde
- in Messing vernickelt
- in Edelstahl
- andere Materialien

**On request:**

- further sizes (combinations)
- other threads
- in brass nickel-plated
- in stainless steel
- other materials

Material: Messing blank  
 O-Ring: EPDM  
 Einsatztemperatur: -40 °C bis 100 °C  
 Schutzart: IP 68

Material: brass  
 O-ring: EPDM  
 Temperature range: -40 °C to 100 °C  
 Protection type: IP 68

**535.12**    **535.23**  
**535.13**    **535.31**  
**535.21**    **535.32**

Zertifikate: SIRA 10 ATEX 1225 X  
 IECEx SIR 07.0010 X

Certificates: SIRA 10 ATEX 1225 X  
 IECEx SIR 07.0010 X

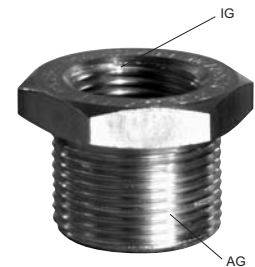
Weitere internationale Zulassungen vorhanden

Further international approvals available



**ATEX II 2GD**  
**Ex d IIC + Ex e II**

Gewinde Thread						Gewinde Thread					
AG	IG	mm	d1	Form	HUGRO No.	AG	IG	mm	d1	Form	HUGRO No.
<b>M Pg</b>						<b>Pg M</b>					
16 x 1,5	9	23,4	11	2	<b>535.1709.21</b>	9	16 x 1,5	23,4	10	2	<b>535.0917.12</b>
16 x 1,5	11	23,4	11	2	<b>535.1711.21</b>	11	16 x 1,5	23,4	14	2	<b>535.1117.12</b>
16 x 1,5	13,5	23,4	11	2	<b>535.1713.21</b>	11	20 x 1,5	23,4	14	2	<b>535.1120.12</b>
20 x 1,5	11	23,4	15	2	<b>535.2011.21</b>	13,5	16 x 1,5	23,4	-	1	<b>535.1317.12</b>
20 x 1,5	13,5	23,4	15	2	<b>535.2013.21</b>	13,5	20 x 1,5	23,4	15	2	<b>535.1320.12</b>
20 x 1,5	16	23,4	15	2	<b>535.2016.21</b>	13,5	25 x 1,5	30,5	15	2	<b>535.1325.12</b>
25 x 1,5	13,5	27,9	-	1	<b>535.2513.21</b>	16	20 x 1,5	23,4	17,5	2	<b>535.1620.12</b>
25 x 1,5	16	27,9	20,5	2	<b>535.2516.21</b>	16	25 x 1,5	30,5	17,5	2	<b>535.1625.12</b>
25 x 1,5	21	27,9	20,5	2	<b>535.2521.21</b>	21	25 x 1,5	30,5	23,5	2	<b>535.2125.12</b>
32 x 1,5	21	37,6	26,8	2	<b>535.3221.21</b>	21	32 x 1,5	37,6	23,5	2	<b>535.2132.12</b>
32 x 1,5	29	37,6	26,8	2	<b>535.3229.21</b>	29	32 x 1,5	42,4	-	1	<b>535.2932.12</b>
40 x 1,5	29	47,2	33,5	2	<b>535.4029.21</b>	29	40 x 1,5	47,2	31	2	<b>535.2940.12</b>
40 x 1,5	36	47,2	33,5	2	<b>535.4036.21</b>	36	40 x 1,5	56	-	1	<b>535.3640.12</b>
50 x 1,5	36	56	44	2	<b>535.5036.21</b>	36	50 x 1,5	56	40	2	<b>535.3650.12</b>
50 x 1,5	42	56	44	2	<b>535.5042.21</b>	42	50 x 1,5	56	48	2	<b>535.4250.12</b>
63 x 1,5	42	70	-	1	<b>535.6342.21</b>	42	63 x 1,5	70	48	2	<b>535.4263.12</b>
63 x 1,5	48	70	55	2	<b>535.6348.21</b>	48	50 x 1,5	70	-	1	<b>535.4850.12</b>
75 x 1,5	42	80	-	1	<b>535.7442.21</b>	48	63 x 1,5	70	53	2	<b>535.4863.12</b>
75 x 1,5	48	80	-	1	<b>535.7448.21</b>	48	75 x 1,5	80	53	2	<b>535.4874.12</b>
<b>M NPT</b>						<b>NPT M</b>					
16 x 1,5	1/2"	23,4	11	2	<b>535.1719.23</b>	1/2"	20 x 1,5	23,4	15	2	<b>535.1920.32</b>
20 x 1,5	1/2"	23,4	15	2	<b>535.2019.23</b>	1/2"	25 x 1,5	30,5	15	2	<b>535.1925.32</b>
20 x 1,5	3/4"	30,5	15	2	<b>535.2035.23</b>	3/4"	20 x 1,5	27,9	-	1	<b>535.3520.32</b>
25 x 1,5	3/4"	30,5	20,5	2	<b>535.2535.23</b>	3/4"	25 x 1,5	30,5	20,5	2	<b>535.3525.32</b>
25 x 1,5	1"	37,6	20,5	2	<b>535.2575.23</b>	1"	25 x 1,5	37,6	-	1	<b>535.7525.32</b>
32 x 1,5	1"	37,6	26,8	2	<b>535.3275.23</b>	1"	32 x 1,5	37,6	26,8	2	<b>535.7532.32</b>
32 x 1,5	1 1/4"	47,2	26,8	2	<b>535.3276.23</b>	1 1/4"	40 x 1,5	47,2	33,5	2	<b>535.7640.32</b>
40 x 1,5	1 1/4"	47,2	33,5	2	<b>535.4076.23</b>	1 1/4"	50 x 1,5	56	33,5	2	<b>535.7650.32</b>
40 x 1,5	1 1/2"	56	33,5	2	<b>535.4077.23</b>	1 1/2"	50 x 1,5	56	41	2	<b>535.7750.32</b>
50 x 1,5	1 1/2"	56	44	2	<b>535.5077.23</b>	1 1/2"	63 x 1,5	70	41	2	<b>535.7763.32</b>
50 x 1,5	2"	70	44	2	<b>535.5078.23</b>	2"	50 x 1,5	70	-	1	<b>535.7850.32</b>
63 x 1,5	2"	70	55	2	<b>535.6378.23</b>	2"	63 x 1,5	70	54	2	<b>535.7863.32</b>
75 x 1,5	2 1/2"	80	64	2	<b>535.7479.23</b>	2 1/2"	75 x 1,5	80	64	2	<b>535.7974.32</b>
<b>Pg NPT</b>						<b>NPT Pg</b>					
9	1/2"	23,4	10	2	<b>535.0919.13</b>	1/2"	9	23,4	-	1	<b>535.1909.31</b>
11	1/2"	23,4	14	2	<b>535.1119.13</b>	1/2"	11	23,4	15	2	<b>535.1911.31</b>
13,5	1/2"	23,4	15	2	<b>535.1319.13</b>	1/2"	13,5	23,4	15	2	<b>535.1913.31</b>
16	1/2"	23,4	17,5	2	<b>535.1619.13</b>	1/2"	16	30,5	15	2	<b>535.1916.31</b>
16	3/4"	30,5	17,5	2	<b>535.1635.13</b>	3/4"	11	27,9	-	1	<b>535.3511.31</b>
21	3/4"	30,5	23,5	2	<b>535.2135.13</b>	3/4"	13,5	27,9	-	1	<b>535.3513.31</b>
21	1"	37,6	23,5	2	<b>535.2175.13</b>	3/4"	16	30,5	20,5	2	<b>535.3516.31</b>
29	1"	42,4	-	1	<b>535.2975.13</b>	3/4"	21	37,6	20,5	2	<b>535.3521.31</b>
29	1 1/4"	47,2	31	2	<b>535.2976.13</b>	1"	21	37,6	26,8	2	<b>535.7521.31</b>
36	1 1/4"	56	-	1	<b>535.3676.13</b>	1"	29	42,4	26,8	2	<b>535.7529.31</b>
36	1 1/2"	56	40	2	<b>535.3677.13</b>	1 1/4"	29	47,2	33,5	2	<b>535.7629.31</b>
42	1 1/2"	56	48	2	<b>535.4277.13</b>	1 1/4"	36	56	33,5	2	<b>535.7636.31</b>
42	2"	70	48	2	<b>535.4278.13</b>	1 1/2"	36	56	41	2	<b>535.7736.31</b>
48	1 1/2"	70	-	1	<b>535.4877.13</b>	1 1/2"	42	70	41	2	<b>535.7742.31</b>
48	2"	70	53	2	<b>535.4878.13</b>	2"	48	70	54	2	<b>535.7848.31</b>
48	2 1/2"	80	53	2	<b>535.4879.13</b>	2 1/2"	48	80	-	1	<b>535.7948.31</b>



Form 1



Form 2

Bitte den Hinweis auf der vorangegangenen Seite beachten

For some notes please refer to the page before

Material: Messing vernickelt  
 O-Ring: NBR  
 Einsatztemperatur: DMT -20 °C bis 95 °C  
 PTB -40 °C bis 100 °C  
 Schutzart: IP 68

Material: brass, nickel-plated  
 O-ring: NBR  
 Temperature range: DMT -20 °C to 95 °C  
 PTB -40 °C to 100 °C  
 Protection type: IP 68

**527.10**  
**527.EX**

Zertifikate: PTB 02 ATEX 1125  
 PTB 02 ATEX 1126 X \*  
 DMT 03 ATEX E 049  
 IECEx BVS 07.0021  
 IECEx SEV 12.0001

Certificates: PTB 02 ATEX 1125  
 PTB 02 ATEX 1126 X \*  
 DMT 03 ATEX E 049  
 IECEx BVS 07.0021  
 IECEx SEV 12.0001

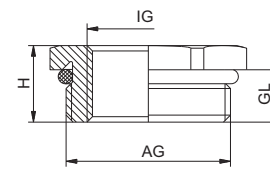
Weitere internationale Zulassungen vorhanden

Further international approvals available



**ATEX II 2G 1D**  
**Ex e II**

Gewinde Thread AG	Gewinde Thread IG	 mm	H mm	GL mm	A-Nummer A-Reference RSD-MS-Ex	HUGRO No.
M 10 x 1,5	M 8 x 1,25	13	13	5	EX3500.10.08	<b>527.1008.EX</b> *
M 12 x 1,5	M 8 x 1,25	15	8	5	EX3500.12.08	<b>527.1508.EX</b> *
M 12 x 1,5	M 10 x 1,5	15	13	5	EX3500.12.10	<b>527.1510.EX</b> *
M 16 x 1,5	M 10 x 1,5	18	8	5	EX3500.17.10	<b>527.1710.EX</b>
M 16 x 1,5	M 12 x 1,5	17	8,5	5	1.078.1612.50	<b>527.1715.10</b>
M 20 x 1,5	M 12 x 1,5	22	9	6	1.078.2012.50	<b>527.2015.10</b>
M 20 x 1,5	M 16 x 1,5	22	9	6	1.078.2016.50	<b>527.2017.10</b>
M 25 x 1,5	M 16 x 1,5	27	10	7	1.078.2516.50	<b>527.2517.10</b>
M 25 x 1,5	M 20 x 1,5	27	10	7	1.078.2520.50	<b>527.2520.10</b>
M 32 x 1,5	M 16 x 1,5	34	11	8	1.078.3216.50	<b>527.3217.10</b>
M 32 x 1,5	M 20 x 1,5	34	11,5	8	1.078.3220.50	<b>527.3220.10</b>
M 32 x 1,5	M 25 x 1,5	34	11,5	8	1.078.3225.50	<b>527.3225.10</b>
M 40 x 1,5	M 20 x 1,5	43	12	8	1.078.4020.50	<b>527.4020.10</b>
M 40 x 1,5	M 25 x 1,5	43	12,5	8	1.078.4025.50	<b>527.4025.10</b>
M 40 x 1,5	M 32 x 1,5	43	12,5	8	1.078.4032.50	<b>527.4032.10</b>
M 50 x 1,5	M 25 x 1,5	55	13	9	1.078.5025.50	<b>527.5025.10</b>
M 50 x 1,5	M 32 x 1,5	55	14	9	1.078.5032.50	<b>527.5032.10</b>
M 50 x 1,5	M 40 x 1,5	55	14	9	1.078.5040.50	<b>527.5040.10</b>
M 63x1,5	M 32 x 1,5	65	14	10	1.078.6332.50	<b>527.6332.10</b>
M 63x1,5	M 40 x 1,5	65	14	10	1.078.6340.50	<b>527.6340.10</b>
M 63x1,5	M 50 x 1,5	65	14	10	1.078.6350.50	<b>527.6350.10</b>
Pg 9	Pg 7	17	8,8	6	1.078.0907.01	<b>527.0907.10</b>
Pg 11	Pg 7	20	9	6	1.078.1107.01	<b>527.1107.10</b>
Pg 11	Pg 9	20	9	6	1.078.1109.01	<b>527.1109.10</b>
Pg 13,5	Pg 9	22	9,5	6,5	1.078.1309.01	<b>527.1309.10</b>
Pg 13,5	Pg 11	22	9,5	6,5	1.078.1311.01	<b>527.1311.10</b>
Pg 16	Pg 9	24	9,5	6,5	1.078.1609.01	<b>527.1609.10</b>
Pg 16	Pg 11	24	9,5	6,5	1.078.1611.01	<b>527.1611.10</b>
Pg 16	Pg 13,5	24	9,5	6,5	1.078.1613.01	<b>527.1613.10</b>
Pg 21	Pg 11	30	10,3	7	1.078.2111.01	<b>527.2111.10</b>
Pg 21	Pg 13,5	30	10,3	7	1.078.2113.01	<b>527.2113.10</b>
Pg 21	Pg 16	30	10,3	7	1.078.2116.01	<b>527.2116.10</b>
Pg 29	Pg 16	40	11,5	8	1.078.2916.01	<b>527.2916.10</b>
Pg 29	Pg 21	40	11,5	8	1.078.2921.01	<b>527.2921.10</b>
Pg 36	Pg 21	50	12,5	9	1.078.3621.01	<b>527.3621.10</b>
Pg 36	Pg 29	50	12,5	9	1.078.3629.01	<b>527.3629.10</b>
Pg 42	Pg 29	57	13,5	10	1.078.4229.01	<b>527.4229.10</b>
Pg 42	Pg 36	57	13,5	10	1.078.4236.01	<b>527.4236.10</b>
Pg 48	Pg 36	64	13,5	10	1.078.4836.01	<b>527.4836.10</b>
Pg 48	Pg 42	64	13,5	10	1.078.4842.01	<b>527.4842.10</b>



**Auf Anfrage:**  
 Serie 527.10 in Edelstahl (1.4305)  
 für Temperaturbereich - 60 °C bis 180 °C

**On request:**  
 Series 527.10 in stainless steel (1.4305)  
 for temperature range -60 °C to 180 °C

# Erweiterungen + Übergangsstücke

# Enlargings + Adaptors



Material: Messing vernickelt  
O-Ring: NBR  
Einsatztemperatur: -40 °C bis 100 °C  
Schutzart: IP 68

Material: brass, nickel-plated  
O-ring: NBR  
Temperature range: -40 °C to 100 °C  
Protection type: IP 68

**530.EX**  
**531.EX**

Zertifikate: PTB 02 ATEX 1125  
PTB 02 ATEX 1126 X \*  
IECEX SEV 12.0001  
IECEX SEV 12.0002 \*


Certificates: PTB 02 ATEX 1125  
PTB 02 ATEX 1126 X \*  
IECEX SEV 12.0001  
IECEX SEV 12.0002 \*

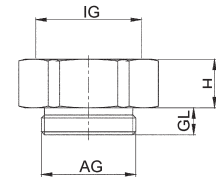


**ATEX II 2GD**  
**Ex e II**  
**Ex tD A21 IP 68**

Weitere internationale Zulassungen vorhanden

Further international approvals available

Gewinde Thread AG	Gewinde Thread IG	 mm	H mm	GL mm	A-Nummer A-Reference	HUGRO No.
M 8 x 1,25	M 10 x 1,5	13	9	5	EX3600.08.10	<b>530.0810.EX *</b>
M 10 x 1,5	M 12 x 1,5	15	9	5	EX3600.10.12	<b>530.1015.EX *</b>
M 10 x 1,5	M 16 x 1,5	18	9	5	EX3600.10.17	<b>530.1017.EX *</b>
M 12 x 1,5	M 16 x 1,5	18	9	5	EX3600.12.17	<b>530.1517.EX *</b>
M 16 x 1,5	M 20 x 1,5	24	10	5	EX3600.17.20	<b>530.1720.EX</b>
M 20 x 1,5	M 25 x 1,5	30	11,5	6	EX3600.20.25	<b>530.2025.EX</b>
M 25 x 1,5	M 32 x 1,5	36	14	7	EX3600.25.32	<b>530.2532.EX</b>
M 32 x 1,5	M 40 x 1,5	46	14	8	EX3600.32.40	<b>530.3240.EX</b>
M 40 x 1,5	M 50 x 1,5	55	16	8	EX3600.40.50	<b>530.4050.EX</b>
M 50 x 1,5	M 63 x 1,5	70	17	9	EX3600.50.63	<b>530.5063.EX</b>
Pg 7	M 8 x 1,25	15	3	6	EX3500.07.08	<b>531.0708.EX</b>
Pg 7	M 10 x 1,5	15	7	6	EX3500.07.10	<b>531.0710.EX</b>
Pg 7	M 12 x 1,5	15	9	6	EX3600.07.12	<b>531.0715.EX *</b>
Pg 7	M 16 x 1,5	18	9	6	EX3600.07.17	<b>531.0717.EX *</b>
Pg 9	M 8 x 1,25	18	3	6	EX3500.09.08	<b>531.0908.EX</b>
Pg 9	M 10 x 1,5	18	3	6	EX3500.09.10	<b>531.0910.EX</b>
Pg 9	M 12 x 1,5	18	8	6	EX3500.09.12	<b>531.0915.EX</b>
Pg 9	M 16 x 1,5	18	9,5	6	EX3600.09.17	<b>531.0917.EX</b>
Pg 9	M 20 x 1,5	24	10,5	6	EX3600.09.20	<b>531.0920.EX</b>
Pg 11	M 8 x 1,25	21	3	6	EX3500.11.08	<b>531.1108.EX</b>
Pg 11	M 10 x 1,5	21	3	6	EX3500.11.10	<b>531.1110.EX</b>
Pg 11	M 12 x 1,5	21	3	6	EX3500.11.12	<b>531.1115.EX</b>
Pg 11	M 16 x 1,5	21	8	6	EX3500.11.17	<b>531.1117.EX</b>
Pg 11	M 20 x 1,5	24	10,5	6	EX3600.11.20	<b>531.1120.EX</b>
Pg 11	M 25 x 1,5	30	11,5	6	EX3600.11.25	<b>531.1125.EX</b>
Pg 13,5	M 12 x 1,5	24	3	6	EX3500.13.12	<b>531.1315.EX</b>
Pg 13,5	M 16 x 1,5	24	3	6	EX3500.13.17	<b>531.1317.EX</b>
Pg 13,5	M 20 x 1,5	24	10,5	6	EX3600.13.20	<b>531.1320.EX</b>
Pg 13,5	M 25 x 1,5	30	11,5	6	EX3600.13.25	<b>531.1325.EX</b>
Pg 16	M 12 x 1,5	24	3	6	EX3500.16.12	<b>531.1615.EX</b>
Pg 16	M 16 x 1,5	24	3	6	EX3500.16.17	<b>531.1617.EX</b>
Pg 16	M 20 x 1,5	24	10,5	6	EX3500.16.20	<b>531.1620.EX</b>
Pg 16	M 25 x 1,5	30	11,5	6	EX3600.16.25	<b>531.1625.EX</b>
Pg 16	M 32 x 1,5	36	13,5	6	EX3600.16.32	<b>531.1632.EX</b>
Pg 21	M 16 x 1,5	30	3,5	7,5	EX3500.21.17	<b>531.2117.EX</b>
Pg 21	M 20 x 1,5	30	3,5	7,5	EX3500.21.20	<b>531.2120.EX</b>
Pg 21	M 25 x 1,5	30	10,5	7,5	EX3500.21.25	<b>531.2125.EX</b>
Pg 21	M 32 x 1,5	36	14	7,5	EX3600.21.32	<b>531.2132.EX</b>
Pg 21	M 40 x 1,5	46	14	7,5	EX3600.21.40	<b>531.2140.EX</b>
Pg 29	M 25 x 1,5	38	4	8	EX3500.29.25	<b>531.2925.EX</b>
Pg 29	M 32 x 1,5	38	13	8	EX3500.29.32	<b>531.2932.EX</b>
Pg 29	M 40 x 1,5	46	14	8	EX3600.29.40	<b>531.2940.EX</b>
Pg 29	M 50 x 1,5	55	16	8	EX3600.29.50	<b>531.2950.EX</b>
Pg 36	M 32 x 1,5	50	4,5	8	EX3500.36.32	<b>531.3632.EX</b>
Pg 36	M 40 x 1,5	50	4,5	8	EX3500.36.40	<b>531.3640.EX</b>
Pg 36	M 50 x 1,5	55	16	8	EX3600.36.50	<b>531.3650.EX</b>
Pg 36	M 63 x 1,5	70	17	8	EX3600.36.63	<b>531.3663.EX</b>
Pg 42	M 32 x 1,5	55	5	10	EX3500.42.32	<b>531.4232.EX</b>
Pg 42	M 40 x 1,5	55	5	10	EX3500.42.40	<b>531.4240.EX</b>
Pg 42	M 50 x 1,5	55	15	10	EX3500.42.50	<b>531.4250.EX</b>
Pg 42	M 63 x 1,5	70	17	10	EX3600.42.63	<b>531.4263.EX</b>
Pg 48	M 40 x 1,5	65	5,5	11	EX3500.48.40	<b>531.4840.EX</b>
Pg 48	M 50 x 1,5	65	5,5	11	EX3500.48.50	<b>531.4850.EX</b>
Pg 48	M 63 x 1,5	70	17	11	EX3600.48.63	<b>531.4863.EX</b>



**Auf Anfrage:**  
für höhere Temperaturbereiche bis 200°C

**On request:**  
for higher temperature up to 200°C

Material: PA, glasfaserverstärkt  
 Farbe: schwarz  
 O-Ring: EPDM  
 Einsatztemperatur: -20 °C bis 65 °C  
 Schutzart: IP 68

Material: PA (Nylon), glass fibre-reinforced  
 Colour: black  
 O-ring: EPDM  
 Temperature range: -20 °C to 65 °C  
 Protection type: IP 68

**573.11**  
**573.22**  
**573.33**

Zertifikate: SIRA 10 ATEX 1225 X  
 IECEx SIR 07.0010 X

Certificates: SIRA 10 ATEX 1225 X  
 IECEx SIR 07.0010 X



Weitere internationale Zulassungen vorhanden

Further international approvals available



**ATEX II 2GD**  
**Ex e II**

Gewinde						Gewinde					
Thread		Ø	d1	Form	HUGRO No.	Thread		Ø	d1	Form	HUGRO No.
AG	IG	mm	mm			AG	IG	mm	mm		
<b>M</b>	<b>M</b>					<b>Pg</b>	<b>Pg</b>				
16 x 1,5	20 x 1,5	24	8	2	<b>573.1720.22</b>	7	9	25	5,5	2	<b>573.0709.11</b>
20 x 1,5	16 x 1,5	25	-	1	<b>573.2017.22</b>	9	7	25	8	2	<b>573.0907.11</b>
20 x 1,5	25 x 1,5	27,5	12,5	2	<b>573.2025.22</b>	9	11	27,5	8	2	<b>573.0911.11</b>
25 x 1,5	16 x 1,5	30	-	1	<b>573.2517.22</b>	11	7	27,5	-	1	<b>573.1107.11</b>
25 x 1,5	20 x 1,5	30	-	1	<b>573.2520.22</b>	11	9	27,5	11	2	<b>573.1109.11</b>
25 x 1,5	32 x 1,5	35,5	17,5	2	<b>573.2532.22</b>	11	13,5	27,5	11	2	<b>573.1113.11</b>
32 x 1,5	20 x 1,5	38	-	1	<b>573.3220.22</b>	13,5	9	27,5	-	1	<b>573.1309.11</b>
32 x 1,5	25 x 1,5	38	-	1	<b>573.3225.22</b>	13,5	11	27,5	12,9	2	<b>573.1311.11</b>
32 x 1,5	40 x 1,5	41	24,5	2	<b>573.3240.22</b>	13,5	16	27,5	12,9	2	<b>573.1316.11</b>
40 x 1,5	25x1,5	46	-	1	<b>573.4025.22</b>	16	11	27,5	-	1	<b>573.1611.11</b>
40 x 1,5	32x1,5	46	-	1	<b>573.4032.22</b>	16	13,5	27,5	-	1	<b>573.1613.11</b>
40 x 1,5	50x1,5	50	32,5	2	<b>573.4050.22</b>	16	21	33	15	2	<b>573.1621.11</b>
50 x 1,5	32x1,5	56	-	1	<b>573.5032.22</b>	21	13,5	33	-	1	<b>573.2113.11</b>
50 x 1,5	40x1,5	56	-	1	<b>573.5040.22</b>	21	16	33	-	1	<b>573.2116.11</b>
50 x 1,5	63x1,5	60	42,5	2	<b>573.5063.22</b>	21	29	43	20,8	2	<b>573.2129.11</b>
63 x 1,5	40x1,5	70	-	1	<b>573.6340.22</b>	29	16	43	-	1	<b>573.2916.11</b>
63 x 1,5	50x1,5	70	-	1	<b>573.6350.22</b>	29	21	43	-	1	<b>573.2921.11</b>
63 x 1,5	75x1,5	75	55	2	<b>573.6374.22</b>	29	36	56	29,5	2	<b>573.2936.11</b>
75 x 1,5	50x1,5	81	-	1	<b>573.7450.22</b>	36	21	56	-	1	<b>573.3621.11</b>
75 x 1,5	63x1,5	81	-	1	<b>573.7463.22</b>	36	29	56	-	1	<b>573.3629.11</b>
						36	42	60	39,5	2	<b>573.3642.11</b>
						42	29	60	-	1	<b>573.4229.11</b>
<b>NPT</b>	<b>NPT</b>					42	36	60	-	1	<b>573.4236.11</b>
1/2"	3/4"	35,5	12	2	<b>573.1935.33</b>	42	48	65	46,5	2	<b>573.4248.11</b>
3/4"	1/2"	35,5	-	1	<b>573.3519.33</b>	48	36	65	-	1	<b>573.4836.11</b>
3/4"	1"	41	17	2	<b>573.3575.33</b>	48	42	65	-	1	<b>573.4842.11</b>
1"	1/2"	41	-	1	<b>573.7519.33</b>						
1"	3/4"	41	-	1	<b>573.7535.33</b>						
1"	1 1/4"	55	23	2	<b>573.7576.33</b>						
1 1/4"	3/4"	55	-	1	<b>573.7635.33</b>						
1 1/4"	1"	55	-	1	<b>573.7675.33</b>						
1 1/4"	1 1/2"	60	32	2	<b>573.7677.33</b>						
1 1/2"	1"	60	-	1	<b>573.7775.33</b>						
1 1/2"	1 1/4"	60	-	1	<b>573.7776.33</b>						
1 1/2"	2"	70	38	2	<b>573.7778.33</b>						
2"	1 1/4"	70	-	1	<b>573.7876.33</b>						
2"	1 1/2"	70	-	1	<b>573.7877.33</b>						
2"	2 1/2"	80	50	2	<b>573.7879.33</b>						
2 1/2"	1 1/2"	80	-	1	<b>573.7977.33</b>						
2 1/2"	2"	80	-	1	<b>573.7978.33</b>						
2 1/2"	3"	95	60	2	<b>573.7980.33</b>						
3"	2"	95	-	1	<b>573.8078.33</b>						
3"	2 1/2"	95	-	1	<b>573.8079.33</b>						



Form 1



Form 2

Weitere Größen (Kombinationen) und andere Gewinde auf Anfrage

Further sizes (combinations) and other threads on request

Material: PA, glasfaserverstärkt  
 Farbe: schwarz  
 O-Ring: EPDM  
 Einsatztemperatur: -20 °C bis 65 °C  
 Schutzart: IP 68

Material: PA (Nylon), glass fibre-reinforced  
 Colour: black  
 O-ring: EPDM  
 Temperature range: -20 °C to 65 °C  
 Protection type: IP 68

**573.12**    **573.23**  
**573.13**    **573.31**  
**573.21**    **573.32**

Zertifikate: SIRA 10 ATEX 1225 X  
 IECEx SIR 07.0010 X

Certificates: SIRA 10 ATEX 1225 X  
 IECEx SIR 07.0010 X



Weitere internationale Zulassungen vorhanden

Further international approvals available



**ATEX II 2GD**  
**Ex e II**

Gewinde Thread					Gewinde Thread						
AG	IG	Ø mm	d1 mm	Form HUGRO No.	AG	IG	Ø mm	d1 mm	Form HUGRO No.		
<b>M</b>	<b>Pg</b>				<b>Pg</b>	<b>M</b>					
16 x 1,5	9	27,5	8	2	573.1709.21	9	16 x 1,5	25	8	2	573.0917.12
16 x 1,5	11	27,5	8	2	573.1711.21	11	16 x 1,5	27,5	11	2	573.1117.12
16 x 1,5	13,5	27,5	8	2	573.1713.21	11	20 x 1,5	27,5	11	2	573.1120.12
20 x 1,5	11	27,5	12,5	2	573.2011.21	13,5	16 x 1,5	25	-	1	573.1317.12
20 x 1,5	13,5	27,5	12,5	2	573.2013.21	13,5	20 x 1,5	27,5	12,9	2	573.1320.12
20 x 1,5	16	35	12,5	2	573.2016.21	13,5	25 x 1,5	35,5	12,9	2	573.1325.12
25 x 1,5	13,5	30	-	1	573.2513.21	16	20 x 1,5	27,5	15	2	573.1620.12
25 x 1,5	16	35,5	17,5	2	573.2516.21	16	25 x 1,5	35,5	15	2	573.1625.12
25 x 1,5	21	35,5	17,5	2	573.2521.21	21	25 x 1,5	35,5	20,8	2	573.2125.12
32 x 1,5	21	41	24,5	2	573.3221.21	21	32 x 1,5	41	20,8	2	573.2132.12
32 x 1,5	29	50	24,5	2	573.3229.21	29	32 x 1,5	43	-	1	573.2932.12
40 x 1,5	29	50	32,5	2	573.4029.21	29	40 x 1,5	50	29,5	2	573.2940.12
40 x 1,5	36	60	32,5	2	573.4036.21	36	40 x 1,5	56	-	1	573.3640.12
50 x 1,5	36	60	42,5	2	573.5036.21	36	50 x 1,5	60	39,5	2	573.3650.12
50 x 1,5	42	70	42,5	2	573.5042.21	42	50 x 1,5	60	46,5	2	573.4250.12
63 x 1,5	42	70	-	1	573.6342.21	42	63 x 1,5	80	46,5	2	573.4263.12
63 x 1,5	48	70	55	2	573.6348.21	48	50 x 1,5	65	-	1	573.4850.12
75 x 1,5	42	81	-	1	573.7442.21	48	63 x 1,5	80	51,8	2	573.4863.12
75 x 1,5	48	81	-	1	573.7448.21	48	75 x 1,5	90	51,8	2	573.4874.12
<b>M</b>	<b>NPT</b>					<b>NPT</b>	<b>M</b>				
16 x 1,5	1/2"	27,5	8	2	573.1719.23	1/2"	20 x 1,5	27,5	12	2	573.1920.32
20 x 1,5	1/2"	27,5	12,5	2	573.2019.23	1/2"	25 x 1,5	35,5	12	2	573.1925.32
20 x 1,5	3/4"	35,5	12,5	2	573.2035.23	3/4"	20 x 1,5	33	-	1	573.3520.32
25 x 1,5	3/4"	35,5	17,5	2	573.2535.23	3/4"	25 x 1,5	35,5	17	2	573.3525.32
25 x 1,5	1"	41	17,5	2	573.2575.23	1"	25 x 1,5	43	-	1	573.7525.32
32 x 1,5	1"	41	24,5	2	573.3275.23	1"	32 x 1,5	43	23	2	573.7532.32
32 x 1,5	1 1/4"	55	24,5	2	573.3276.23	1 1/4"	40 x 1,5	50	32	2	573.7640.32
40 x 1,5	1 1/4"	55	32,5	2	573.4076.23	1 1/4"	50 x 1,5	60	32	2	573.7650.32
40 x 1,5	1 1/2"	60	32,5	2	573.4077.23	1 1/2"	50 x 1,5	60	38	2	573.7750.32
50 x 1,5	1 1/2"	60	42,5	2	573.5077.23	1 1/2"	63 x 1,5	80	38	2	573.7763.32
50 x 1,5	2"	70	42,5	2	573.5078.23	2"	50 x 1,5	70	-	1	573.7850.32
63 x 1,5	2"	70	55	2	573.6378.23	2"	63 x 1,5	80	50	2	573.7863.32
75 x 1,5	2 1/2"	80	66	2	573.7479.23	2 1/2"	75 x 1,5	90	64	2	573.7974.32
<b>Pg</b>	<b>NPT</b>					<b>NPT</b>	<b>Pg</b>				
9	1/2"	27,5	8	2	573.0919.13	1/2"	9	27,5	-	1	573.1909.31
11	1/2"	27,5	11	2	573.1119.13	1/2"	11	27,5	12	2	573.1911.31
13,5	1/2"	27,5	12,9	2	573.1319.13	1/2"	13,5	27,5	12	2	573.1913.31
16	1/2"	27,5	15	2	573.1619.13	1/2"	16	35,5	12	2	573.1916.31
16	3/4"	35,5	15	2	573.1635.13	3/4"	11	33	-	1	573.3511.31
21	3/4"	35,5	20,8	2	573.2135.13	3/4"	13,5	33	-	1	573.3513.31
21	1"	41	20,8	2	573.2175.13	3/4"	16	35,5	17	2	573.3516.31
29	1"	43	-	1	573.2975.13	3/4"	21	43	17	2	573.3521.31
29	1 1/4"	50	29,5	2	573.2976.13	1"	21	50	23	2	573.7521.31
36	1 1/4"	56	-	1	573.3676.13	1"	29	50	23	2	575.7529.31
36	1 1/2"	60	39,5	2	573.3677.13	1 1/4"	29	50	32	2	575.7629.31
42	1 1/2"	60	46,5	2	573.4277.13	1 1/4"	36	60	32	2	573.7636.31
42	2"	70	46,5	2	573.4278.13	1 1/2"	36	60	38	2	573.7736.31
48	1 1/2"	65	-	1	573.4877.13	1 1/2"	42	70	38	2	573.7742.31
48	2"	70	51,8	2	573.4878.13	2"	48	70	50	2	573.7848.31
48	2 1/2"	80	51,8	2	573.4879.13	2 1/2"	48	80	64	2	573.7948.31



Form 1



Form 2

Weitere Größen (Kombinationen) und andere Gewinde auf Anfrage

Further sizes (combinations) and other threads on request

Material: Messing vernickelt  
O-Ring: NBR  
Einsatztemperatur: -40 °C bis 100 °C  
Schutzart: IP 68 / IP 69 K

Material: brass, nickel-plated  
O-ring: NBR  
Temperature range: -40 °C to 100 °C  
Protection type: IP 68 / IP 69 K

## 548.EX

Zertifikate: PTB 00 ATEX 1059  
IECEX PTB 12.0056

Certificates: PTB 00 ATEX 1059  
IECEX PTB 12.0056

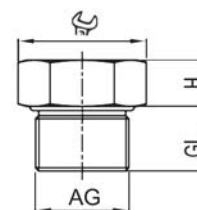
Weitere internationale Zulassungen vorhanden

Further international approvals available



**ATEX II 2GD**  
Ex d IIC  
Ex tD A21 IP 68

Gewinde Entry Thread AG	mm	H mm	GL mm	A-Nummer A-Reference	HUGRO No.
M 12 x 1,5	15	5	15	8710.12	<b>548.15.EX</b>
M 16 x 1,5	18	6	15	8710.17	<b>548.17.EX</b>
M 20 x 1,5	20	8	15	8710.20	<b>548.20.EX</b>
M 25 x 1,5	30	10	15	8710.25	<b>548.25.EX</b>
M 32 x 1,5	36	12	15	8710.32	<b>548.32.EX</b>
M 40 x 1,5	46	12	15	8710.40	<b>548.40.EX</b>
M 50 x 1,5	55	12	15	8710.50	<b>548.50.EX</b>
M 63 x 1,5	70	12	15	8710.63	<b>548.63.EX</b>
Pg 7	16	6,4	10,5	8710.07	<b>548.07.EX</b>
Pg 9	18	7,5	12	8710.09	<b>548.09.EX</b>
Pg 11	21	8,8	12	8710.11	<b>548.11.EX</b>
Pg 13,5	24	10	14	8710.13	<b>548.13.EX</b>
Pg 16	27	11,5	14	8710.16	<b>548.16.EX</b>
Pg 21	32	14	16	8710.21	<b>548.21.EX</b>
Pg 29	41	17	17	8710.29	<b>548.29.EX</b>
Pg 36	55	22,5	17	8710.36	<b>548.36.EX</b>



**Auf Anfrage:**

- für höhere Temperaturen bis 200 °C

**On request:**

- for higher temperatures up to 200 °C







# Blindstopfen/ Verschluss-Schrauben

# Stopping Plugs



Material: Messing vernickelt  
 O-Ring: NBR oder FKM  
 Einsatztemperatur: 548.10 -20°C bis 95°C  
 548.13 -20°C bis 180°C  
 Schutzart: IP 68/IP 69K  
 Zertifikate: DMT 03 ATEX E 049  
 IECEx BVS 07.0021

Material: brass, nickel-plated  
 O-ring: NBR or FKM  
 Temperature range: 548.10 -20°C to 95°C  
 548.13 -20°C to 180°C  
 Protection type: IP 68/IP 69K  
 Certificates: DMT 03 ATEX E 049  
 IECEx BVS 07.0021


**548.10**  
**548.13**

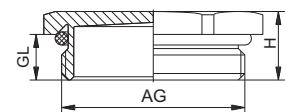
Weitere internationale Zulassungen vorhanden


Further international approvals available



**ATEX II 2G 1D**  
**Ex e II**

Gewinde Entry Thread AG	 mm	H mm	GL mm	V-Ms-Ex	NBR-O-Ring HUGRO No.
M 12 x 1,5	14	8	5	1.197.1200.50	<b>548.15.10</b>
M 16 x 1,5	19	9	6	1.197.1600.50	<b>548.17.10</b>
M 20 x 1,5	22	9,5	6	1.197.2000.50	<b>548.20.10</b>
M 25 x 1,5	30	10,5	7	1.197.2500.50	<b>548.25.10</b>
M 32 x 1,5	41	12,5	8	1.197.3200.50	<b>548.32.10</b>
M 40 x 1,5	46	13	8	1.197.4000.50	<b>548.40.10</b>
M 50 x 1,5	55	15	9	1.197.5000.50	<b>548.50.10</b>
M 63 x 1,5	70	16,5	10	1.197.6300.50	<b>548.63.10</b>
Pg 7	14	8	5	1.197.0700.01	<b>548.07.10</b>
Pg 9	17	9	6	1.197.0900.01	<b>548.09.10</b>
Pg 11	20	9,5	6	1.197.1100.01	<b>548.11.10</b>
Pg 13,5	22	10	6,5	1.197.1300.01	<b>548.13.10</b>
Pg 16	24	10	6,5	1.197.1600.01	<b>548.16.10</b>
Pg 21	30	10,5	7	1.197.2100.01	<b>548.21.10</b>
Pg 29	41	12,5	8	1.197.2900.01	<b>548.29.10</b>
Pg 36	50	13	8	1.197.3600.01	<b>548.36.10</b>
Pg 42	58	15	9	1.197.4200.01	<b>548.42.10</b>
Pg 48	65	16,5	10	1.197.4800.01	<b>548.48.10</b>



Gewinde Entry Thread AG	 mm	H mm	GL mm	V-Ms-FPM-Ex	FPM-O-Ring HUGRO No.
M 12 x 1,5	14	8	5	1.198.1200.50	<b>548.15.13</b>
M 16 x 1,5	19	9	6	1.198.1600.50	<b>548.17.13</b>
M 20 x 1,5	22	9,5	6	1.198.2000.50	<b>548.20.13</b>
M 25 x 1,5	30	10,5	7	1.198.2500.50	<b>548.25.13</b>
M 32 x 1,5	41	12,5	8	1.198.3200.50	<b>548.32.13</b>
M 40 x 1,5	46	13	8	1.198.4000.50	<b>548.40.13</b>
M 50 x 1,5	55	15	9	1.198.5000.50	<b>548.50.13</b>
M 63 x 1,5	70	16,5	10	1.198.6300.50	<b>548.63.13</b>
Pg 7	14	8	5	1.198.0700.01	<b>548.07.13</b>
Pg 9	17	9	6	1.198.0900.01	<b>548.09.13</b>
Pg 11	20	9,5	6	1.198.1100.01	<b>548.11.13</b>
Pg 13,5	22	10	6,5	1.198.1300.01	<b>548.13.13</b>
Pg 16	24	10	6,5	1.198.1600.01	<b>548.16.13</b>
Pg 21	30	10,5	7	1.198.2100.01	<b>548.21.13</b>
Pg 29	41	12,5	8	1.198.2900.01	<b>548.29.13</b>
Pg 36	50	13	8	1.198.3600.01	<b>548.36.13</b>
Pg 42	58	15	9	1.198.4200.01	<b>548.42.13</b>
Pg 48	65	16,5	10	1.198.4800.01	<b>548.48.13</b>



**Auf Anfrage:**  
 in Edelstahl (1.4305)  
 für Temperaturbereich -60°C bis 180°C  
 für Zündschutzart Ex d in Edelstahl (1.4404)

**On request:**  
 in stainless steel (1.4305)  
 for temperatur range -60°C to 180°C  
 for ignition protection category Ex d in  
 stainless steel (1.4404)

Material: Messing vernickelt  
O-Ring: NBR  
Einsatztemperatur: -40 °C bis 100 °C  
Schutzart: IP 68

Material: brass, nickel-plated  
O-ring: NBR  
Temperature range: -40 °C to 100 °C  
Protection type: IP 68

## 545.EX

Zertifikate: PTB 02 ATEX 1125  
IECEX SEV 12.0001

Certificates: PTB 02 ATEX 1125  
IECEX SEV 12.0001

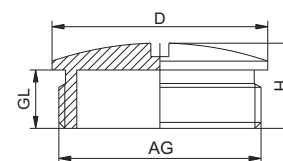
Weitere internationale Zulassungen vorhanden

Further international approvals available



**ATEX II 2GD**  
**Ex e II**  
**Ex tD A21 IP 68**

Gewinde Thread AG	D mm	H mm	GL mm	A-Nummer A-Reference	HUGRO No.
M 8 x 1,25	10	8	5	EX8708.08	<b>545.08.EX</b>
M 10 x 1,5	12	8	5	EX8710.08	<b>545.10.EX</b>
M 12 x 1,5	14	8	5	EX8712.08	<b>545.15.EX</b>
M 16 x 1,5	19	8	5	EX8717.08	<b>545.17.EX</b>
M 20 x 1,5	24	9	6	EX8720.08	<b>545.20.EX</b>
M 25 x 1,5	28	11	7	EX8725.08	<b>545.25.EX</b>
M 32 x 1,5	35	12	8	EX8732.08	<b>545.32.EX</b>
M 40 x 1,5	45	14	8	EX8740.08	<b>545.40.EX</b>
M 50 x 1,5	55	15	9	EX8750.08	<b>545.50.EX</b>
M 63 x 1,5	70	16	10	EX8763.08	<b>545.63.EX</b>
Pg 7	14	8	5	EX8707.08	<b>545.07.EX</b>
Pg 9	17	9	6	EX8709.08	<b>545.09.EX</b>
Pg 11	20	9	6	EX8711.08	<b>545.11.EX</b>
Pg 13,5	22	9,5	6,5	EX8713.08	<b>545.13.EX</b>
Pg 16	24	9,5	6,5	EX8716.08	<b>545.16.EX</b>
Pg 21	30	11	7	EX8721.08	<b>545.21.EX</b>
Pg 29	39	12	8	EX8729.08	<b>545.29.EX</b>
Pg 36	50	15	9	EX8736.08	<b>545.36.EX</b>
Pg 48	65	16	10	EX8748.08	<b>545.48.EX</b>



**Auf Anfrage:**

- mit langem Anschlussgewinde
- aus rostfreiem Stahl 1.4305 oder 1.4435
- für höhere Temperaturen bis 200 °C

**On request:**

- with long entry thread
- made of stainless steel 1.4305 or 1.4435
- for higher temperature up to 200 °C



# Blindstopfen/ Verschluss-Schrauben

# Stopping Plugs



Material: PA  
 Farbe: schwarz  
 O-Ring: NBR  
 Einsatztemperatur: -20 °C bis 90 °C  
 Schutzart: IP 68/IP 69K

Zertifikate DMT 03 ATEX E 049  
 IECEx BVS 07.0021

Material: PA (Nylon)  
 Colour: black  
 O-ring: NBR  
 Temperature range: -20 °C to 90 °C  
 Protection type: IP 68/IP 69K

Certificates: DMT 03 ATEX E 049  
 IECEx BVS 07.0021

**586.11**



Weitere internationale Zulassungen vorhanden

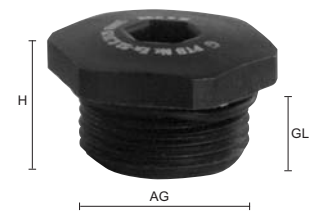
Further international approvals available



**ATEX II 2G 1D  
Ex e II**



Gewinde Entry Thread AG	 mm	H mm	GL mm	 mm	V-EX	HUGRO No.
M 12 x 1,5	15	13	8,5	6	1.297.1201.50	<b>586.15.11</b>
M 16 x 1,5	19	13	8,5	8	1.297.1601.50	<b>586.17.11</b>
M 20 x 1,5	24	14,5	9	8	1.297.2001.50	<b>586.20.11</b>
M 25 x 1,5	28	16	10,5	8	1.297.2501.50	<b>586.25.11</b>
M 32 x 1,5	36	17,5	11,5	8	1.297.3201.50	<b>586.32.11</b>
M 40 x 1,5	46	18	11,5	8	1.297.4001.50	<b>586.40.11</b>
M 50 x 1,5	55	20	13,5	8	1.297.5001.50	<b>586.50.11</b>
M 63 x 1,5	70	21	14,5	8	1.297.6301.50	<b>586.63.11</b>
Pg 7	15	13	8,5	6	1.297.0701.11	<b>586.07.11</b>
Pg 9	19	13	8,5	8	1.297.0901.11	<b>586.09.11</b>
Pg 11	24	14,5	9	8	1.297.1101.11	<b>586.11.11</b>
Pg 13,5	24	14,5	9	8	1.297.1301.11	<b>586.13.11</b>
Pg 16	28	16	10,5	8	1.297.1601.11	<b>586.16.11</b>
Pg 21	36	17,5	11,5	8	1.297.2101.11	<b>586.21.11</b>
Pg 29	46	18	11,5	8	1.297.2901.11	<b>586.29.11</b>
Pg 36	55	20	13,5	8	1.297.3601.11	<b>586.36.11</b>
Pg 42	60	20	13,5	8	1.297.4201.11	<b>586.42.11</b>
Pg 48	70	21	14,5	8	1.297.4801.11	<b>586.48.11</b>



Material: PA, glasfaserverstärkt  
 Farbe: schwarz  
 O-Ring: CR  
 Einsatztemperatur: -20 °C bis 65 °C  
 Schutzart: IP 68

Zertifikat: SIRA 10 ATEX 1224 X


Material: PA (Nylon), glass fibre-reinforced  
 Colour: black  
 O-ring: CR  
 Temperature range: -20 °C to 65 °C  
 Protection type: IP 68

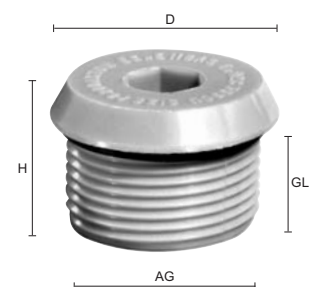
Certificate: SIRA 10 ATEX 1224 X

**587.11**



**ATEX II 2GD  
Ex e II**

Gewinde Entry Thread AG	D mm	H mm	GL mm	 mm	schwarz / black HUGRO No.
M 16 x 1,5	20,5	20	15	6	<b>587.17.11</b>
M 20 x 1,5	25	20	15	10	<b>587.20.11</b>
M 25 x 1,5	30	20	15	10	<b>587.25.11</b>
M 32 x 1,5	38	20	15	10	<b>587.32.11</b>
M 40 x 1,5	46	20	15	19	<b>587.40.11</b>
M 50 x 1,5	56	20	15	19	<b>587.50.11</b>
M 63 x 1,5	69	20	15	19	<b>587.63.11</b>
M 75 x 1,5	81	20	15	19	<b>587.74.11</b>
3/8" NPT	25,1	20	15	10	<b>587.39.11</b>
1/2" NPT	27,5	20	15	10	<b>587.19.11</b>
3/4" NPT	33	20	15	10	<b>587.35.11</b>
1" NPT	44	20	15	19	<b>587.75.11</b>
1 1/4" NPT	56,1	20	15	19	<b>587.76.11</b>
1 1/2" NPT	56	20	15	19	<b>587.77.11</b>
2" NPT	69	20	15	19	<b>587.78.11</b>



Weitere Größen und andere Gewinde auf Anfrage **Other sizes and other threads on request**

**WAZU-V/EX**

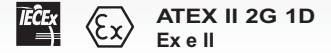
**684.11**

Material: Elastomer  
Farbe: schwarz  
Einsatztemperatur: -40 °C bis 95 °C  
  
Zertifikate: BSV 03 ATEX E 298  
IECEX BVS 07.0022 X

Material: Elastomer  
Colour: black  
Temperature range: -40 °C to 95 °C  
  
Certificates: BSV 03 ATEX E 298  
IECEX BVS 07.0022 X

Weitere internationale Zulassungen vorhanden

Further international approvals available



für Nenngröße for size	für Hutmutter SW for dome nut A/F		D mm	d mm	H mm	L mm	HUGRO No.
	Metall	Plastic					
M 12 + Pg 7	14	15	9,5	6,3	11,5	7	684.07.11
M 16 + Pg 9 + 3/8" NPT	17	19	11	7,8	13,5	8	684.09.11
M 16 + Pg 11 + 3/8" NPT	20	22	13,5	9,8	14,5	9	684.11.11
M 20 + Pg 13,5 + 1/2" NPT	22	24	16	11,8	18	10	684.13.11
M 20 + Pg 16 + 1/2" NPT	24	27	18,5	13,8	19	10	684.16.11
M 25 + Pg 21 + 3/4" NPT	30	33	22	17,8	22	11	684.21.11
M 32 + Pg 29 + 1" + 1 1/4"	40	42	29	25	25	15	684.29.11
M 40 + Pg 36 + 1 1/2" NPT	50	53	38	32	28	17	684.36.11
M 50 + Pg 42	57	60	43	38	30	18	684.42.11
M 63 + Pg 48	68/64	68/65	49	44	30	18	684.48.11

